



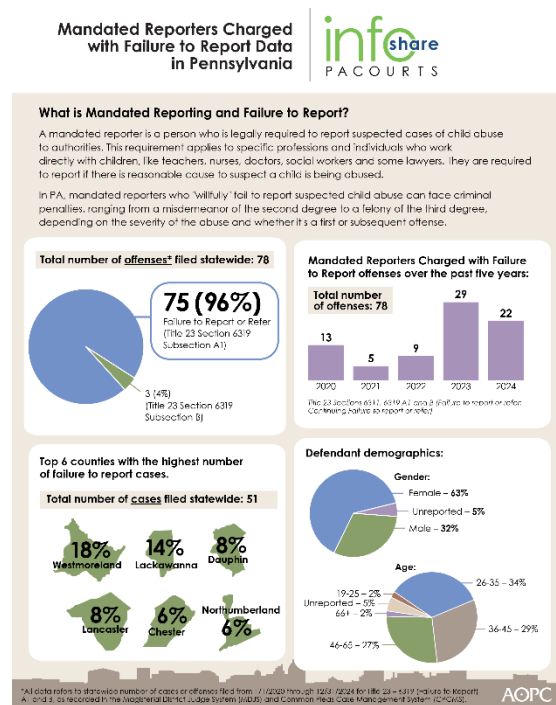
## Infographic for Immediate Release

Aug, 29, 2025

### Mandated Reporters Charged with Failure to Report Data in Pennsylvania

HARRISBURG- A mandated reporter is a person who is legally required to report suspected cases of child abuse to authorities. In Pennsylvania, mandated reporters who fail to report suspected child abuse can face criminal penalties, ranging from a misdemeanor of the second degree to a felony of the third degree, depending on the severity of the abuse and whether it's a first or subsequent offense.

The infographic below highlights key data and demographics about failure to report charges in Pennsylvania over the past five years. [Download a high-resolution file of the graphic](#) and county level data is provided at the end of the release.



**PA Courts InfoShare** is a monthly product of the Administrative Office of Pennsylvania Courts (AOPC) that visually highlights the work of the courts with interesting data and statistics obtained through the judiciary's case management systems, interactive dashboards and other research. Reproduction is encouraged with source cited.



Media Contact: [Olivia Antonucci](#), 609-238-5182

Statewide number of cases filed from 1/1/2020 through 12/31/2024 with the requested offenses below, as recorded in the Magisterial District Judge System (MDJS) and Common Pleas Case Management System (CPCMS); Grouped by County / Offense  
*\*If a case contains more than one of the offenses it is counted under each Section total.*

| County / Offense                                      | 2020     | 2021     | 2022     | 2023     | 2024     | Grand Total | Percentage of Total |
|---|----------|----------|----------|----------|----------|-------------|---------------------|
| <b>Adams</b>  | <b>0</b> | <b>0</b> | <b>0</b> | <b>1</b> | <b>1</b> | <b>2</b>    | <b>3.92%</b>        |
| 23 - 6319 - A1 - Failure to Report or Refer           | 0        | 0        | 0        | 0        | 1        | 1           | 1.96%               |
| 23 - 6319 - B - Continuing Failure to Report or Refer | 0        | 0        | 0        | 1        | 0        | 1           | 1.96%               |
| <b>Armstrong</b>                                      | <b>1</b> | <b>0</b> | <b>0</b> | <b>0</b> | <b>0</b> | <b>1</b>    | <b>1.96%</b>        |
| 23 - 6319 - A1 - Failure to Report or Refer           | 1        | 0        | 0        | 0        | 0        | 1           | 1.96%               |
| <b>Bedford</b>  | <b>0</b> | <b>0</b> | <b>0</b> | <b>0</b> | <b>2</b> | <b>2</b>    | <b>3.92%</b>        |
| 23 - 6319 - A1 - Failure to Report or Refer           | 0        | 0        | 0        | 0        | 1        | 1           | 1.96%               |
| 23 - 6319 - B - Continuing Failure to Report or Refer | 0        | 0        | 0        | 0        | 1        | 1           | 1.96%               |
| <b>Blair</b>  | <b>0</b> | <b>0</b> | <b>0</b> | <b>0</b> | <b>1</b> | <b>1</b>    | <b>1.96%</b>        |
| 23 - 6319 - A1 - Failure to Report or Refer           | 0        | 0        | 0        | 0        | 1        | 1           | 1.96%               |
| <b>Bucks</b>  | <b>0</b> | <b>0</b> | <b>0</b> | <b>0</b> | <b>1</b> | <b>1</b>    | <b>1.96%</b>        |
| 23 - 6319 - A1 - Failure to Report or Refer           | 0        | 0        | 0        | 0        | 1        | 1           | 1.96%               |
| <b>Butler</b>   | <b>0</b> | <b>0</b> | <b>0</b> | <b>2</b> | <b>0</b> | <b>2</b>    | <b>3.92%</b>        |
| 23 - 6319 - A1 - Failure to Report or Refer           | 0        | 0        | 0        | 2        | 0        | 2           | 3.92%               |
| <b>Chester</b>  | <b>2</b> | <b>1</b> | <b>0</b> | <b>0</b> | <b>0</b> | <b>3</b>    | <b>5.88%</b>        |
| 23 - 6319 - A1 - Failure to Report or Refer           | 2        | 1        | 0        | 0        | 0        | 3           | 5.88%               |
| <b>Clearfield</b>                                     | <b>0</b> | <b>0</b> | <b>0</b> | <b>1</b> | <b>1</b> | <b>2</b>    | <b>3.92%</b>        |
| 23 - 6319 - A1 - Failure to Report or Refer           | 0        | 0        | 0        | 1        | 1        | 2           | 3.92%               |
| <b>Columbia</b>                                       | <b>1</b> | <b>0</b> | <b>0</b> | <b>0</b> | <b>0</b> | <b>1</b>    | <b>1.96%</b>        |
| 23 - 6319 - A1 - Failure to Report or Refer           | 1        | 0        | 0        | 0        | 0        | 1           | 1.96%               |
| <b>Dauphin</b>  | <b>1</b> | <b>1</b> | <b>1</b> | <b>0</b> | <b>1</b> | <b>4</b>    | <b>7.84%</b>        |
| 23 - 6319 - A1 - Failure to Report or Refer           | 1        | 1        | 1        | 0        | 1        | 4           | 7.84%               |
| <b>Delaware</b>                                       | <b>0</b> | <b>0</b> | <b>0</b> | <b>1</b> | <b>0</b> | <b>1</b>    | <b>1.96%</b>        |
| 23 - 6319 - A1 - Failure to Report or Refer           | 0        | 0        | 0        | 1        | 0        | 1           | 1.96%               |
| <b>Erie</b>   | <b>0</b> | <b>0</b> | <b>1</b> | <b>0</b> | <b>1</b> | <b>2</b>    | <b>3.92%</b>        |
| 23 - 6319 - A1 - Failure to Report or Refer           | 0        | 0        | 1        | 0        | 1        | 2           | 3.92%               |
| <b>Fayette</b>  | <b>0</b> | <b>1</b> | <b>0</b> | <b>0</b> | <b>0</b> | <b>1</b>    | <b>1.96%</b>        |
| 23 - 6319 - A1 - Failure to Report or Refer           | 0        | 1        | 0        | 0        | 0        | 1           | 1.96%               |
| <b>Lackawanna</b>                                     | <b>1</b> | <b>0</b> | <b>0</b> | <b>6</b> | <b>0</b> | <b>7</b>    | <b>13.73%</b>       |
| 23 - 6319 - A1 - Failure to Report or Refer           | 1        | 0        | 0        | 6        | 0        | 7           | 13.73%              |
| <b>Lancaster</b>                                      | <b>4</b> | <b>0</b> | <b>0</b> | <b>0</b> | <b>0</b> | <b>4</b>    | <b>7.84%</b>        |

|   |           |          |          |           |           |           |                |
|---|-----------|----------|----------|-----------|-----------|-----------|----------------|
| 23 - 6319 - A1 - Failure to Report or Refer           | 4         | 0        | 0        | 0         | 0         | 4         | 7.84%          |
| <b>Lehigh</b>   | <b>0</b>  | <b>1</b> | <b>0</b> | <b>0</b>  | <b>0</b>  | <b>1</b>  | <b>1.96%</b>   |
| 23 - 6319 - A1 - Failure to Report or Refer           | 0         | 1        | 0        | 0         | 0         | 1         | 1.96%          |
| <b>Monroe</b>   | <b>0</b>  | <b>0</b> | <b>1</b> | <b>0</b>  | <b>0</b>  | <b>1</b>  | <b>1.96%</b>   |
| 23 - 6319 - A1 - Failure to Report or Refer           | 0         | 0        | 1        | 0         | 0         | 1         | 1.96%          |
| <b>Northumberland</b>                                 | <b>0</b>  | <b>0</b> | <b>2</b> | <b>1</b>  | <b>0</b>  | <b>3</b>  | <b>5.88%</b>   |
| 23 - 6319 - A1 - Failure to Report or Refer           | 0         | 0        | 2        | 1         | 0         | 3         | 5.88%          |
| <b>Union</b>  | <b>0</b>  | <b>0</b> | <b>0</b> | <b>0</b>  | <b>2</b>  | <b>2</b>  | <b>3.92%</b>   |
| 23 - 6319 - A1 - Failure to Report or Refer           | 0         | 0        | 0        | 0         | 1         | 1         | 1.96%          |
| 23 - 6319 - B - Continuing Failure to Report or Refer | 0         | 0        | 0        | 0         | 1         | 1         | 1.96%          |
| <b>Westmoreland</b>                                   | <b>2</b>  | <b>0</b> | <b>1</b> | <b>2</b>  | <b>4</b>  | <b>9</b>  | <b>17.65%</b>  |
| 23 - 6319 - A1 - Failure to Report or Refer           | 2         | 0        | 1        | 2         | 4         | 9         | 17.65%         |
| <b>Wyoming</b>  | <b>0</b>  | <b>0</b> | <b>0</b> | <b>0</b>  | <b>1</b>  | <b>1</b>  | <b>1.96%</b>   |
| 23 - 6319 - A1 - Failure to Report or Refer           | 0         | 0        | 0        | 0         | 1         | 1         | 1.96%          |
| <b>Grand Total</b>                                    | <b>12</b> | <b>4</b> | <b>6</b> | <b>14</b> | <b>15</b> | <b>51</b> | <b>100.00%</b> |