

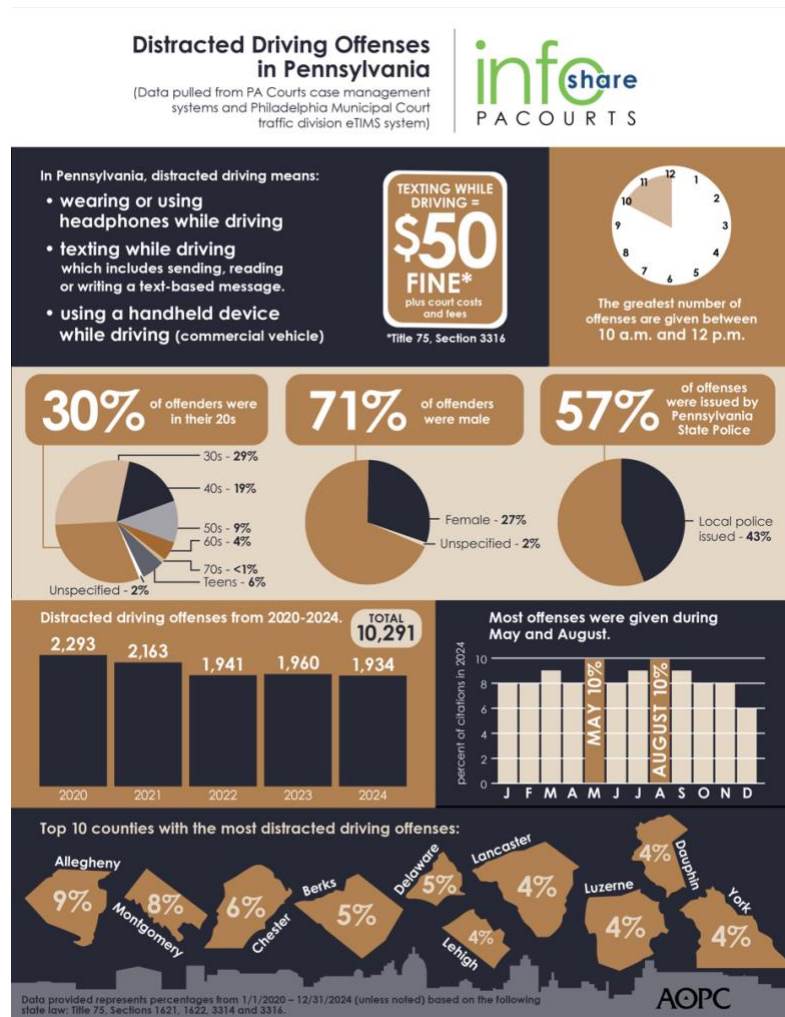
Infographic for Immediate Release

April 4, 2025

Distracted driving offenses in Pennsylvania

HARRISBURG – Pennsylvania had over **10,000 offenses** reported between **2020 and 2024**. New data reveals that people in their **20's are the most common offenders** and violations peak between 10 a.m. and noon.

Distracted driving offenses in Pennsylvania can be issued for 1) using headphones while driving, 2) using a handheld mobile phone while driving a commercial vehicle or 3) texting while driving. Texting includes sending, reading or writing a text-based message.



The infographic highlights key data and demographics about distracted drivers in Pennsylvania over the last five years (2020 – 2024). A high-resolution file of the graphic is available for download at www.pacourts.us under [Media Resources](#). See editor’s note for detailed county data.

PA Courts InfoShare is a monthly product of the Administrative Office of Pennsylvania Courts (AOPC) that visually highlights the work of the courts with interesting data and statistics obtained through the judiciary’s case management systems, interactive dashboards and other research. Reproduction is permissible with source cited.

###

Media contact: [Olivia Antonucci](#), 609-238-5182

Editor’s Note:

Statewide Count of distracted driving offenses filed from 1/1/2020 through 12/31/2024, as recorded in the Magisterial District Judge System (MDJS) and Philadelphia Municipal Court Traffic Division eTIMS System; Grouped by County

County	2020	2021	2022	2023	2024	Total	Percentage of Total
Adams	37	31	18	27	26	139	1.35%
Allegheny	197	219	153	172	156	897	8.72%
Armstrong	8	8	8	7	5	36	0.35%
Beaver	15	10	17	17	12	71	0.69%
Bedford	17	11	11	25	5	69	0.67%
Berks	103	83	82	84	184	536	5.21%
Blair	16	18	9	14	19	76	0.74%
Bradford	5	7	14	11	8	45	0.44%
Bucks	60	56	52	53	63	284	2.76%
Butler	35	21	32	30	23	141	1.37%
Cambria	12	11	11	9	4	47	0.46%
Cameron	1	1	0	1	0	3	0.03%
Carbon	18	19	15	13	11	76	0.74%
Centre	13	12	10	18	12	65	0.63%
Chester	116	102	116	116	119	569	5.53%
Clarion	16	4	8	21	11	60	0.58%
Clearfield	22	10	18	17	8	75	0.73%
Clinton	12	15	12	5	3	47	0.46%
Columbia	37	25	38	18	13	131	1.27%
Crawford	38	16	12	9	18	93	0.90%
Cumberland	113	95	58	51	43	360	3.50%
Dauphin	106	75	73	75	42	371	3.61%
Delaware	80	95	109	89	149	522	5.07%
Elk	4	16	6	6	5	37	0.36%
Erie	37	44	43	28	29	181	1.76%

Fayette	16	22	21	20	8	87	0.85%
Forest	4	2	3	1	3	13	0.13%
Franklin	59	40	45	50	42	236	2.29%
Fulton	6	3	3	1	3	16	0.16%
Greene	1	5	17	8	5	36	0.35%
Huntingdon	2	4	4	8	2	20	0.19%
Indiana	5	7	5	7	4	28	0.27%
Jefferson	35	10	11	12	13	81	0.79%
Juniata	8	2	6	5	5	26	0.25%
Lackawanna	47	45	39	51	56	238	2.31%
Lancaster	82	58	81	81	59	361	3.51%
Lawrence	8	13	11	10	9	51	0.50%
Lebanon	26	28	20	33	19	126	1.22%
Lehigh	90	78	64	98	76	406	3.95%
Luzerne	83	84	94	108	88	457	4.44%
Lycoming	15	12	11	6	16	60	0.58%
McKean	7	6	9	12	9	43	0.42%
Mercer	27	30	17	26	20	120	1.17%
Mifflin	2	7	4	6	6	25	0.24%
Monroe	46	35	40	30	34	185	1.80%
Montgomery	188	221	150	122	158	839	8.15%
Montour	0	3	3	3	3	12	0.12%
Northampton	51	54	40	35	45	225	2.19%
Northumberland	22	8	5	9	10	54	0.52%
Perry	6	10	6	10	6	38	0.37%
Philadelphia	74	61	56	41	49	281	2.73%
Pike	11	12	10	9	9	51	0.50%
Potter	2	7	6	6	3	24	0.23%
Schuylkill	14	28	18	24	12	96	0.93%
Snyder	13	17	12	13	4	59	0.57%
Somerset	16	6	10	5	6	43	0.42%
Sullivan	2	0	1	0	3	6	0.06%
Susquehanna	14	21	25	20	11	91	0.88%
Tioga	3	7	10	5	7	32	0.31%
Union	5	4	3	6	5	23	0.22%
Venango	22	21	10	7	4	64	0.62%
Warren	3	6	3	2	7	21	0.20%
Washington	34	25	18	38	21	136	1.32%
Wayne	5	8	2	5	2	22	0.21%
Westmoreland	39	54	32	38	34	197	1.91%
Wyoming	5	3	4	3	8	23	0.22%

York	77	92	87	70	82	408	3.96%
Grand Total	2,293	2,163	1,941	1,960	1,934	10,291	N/A