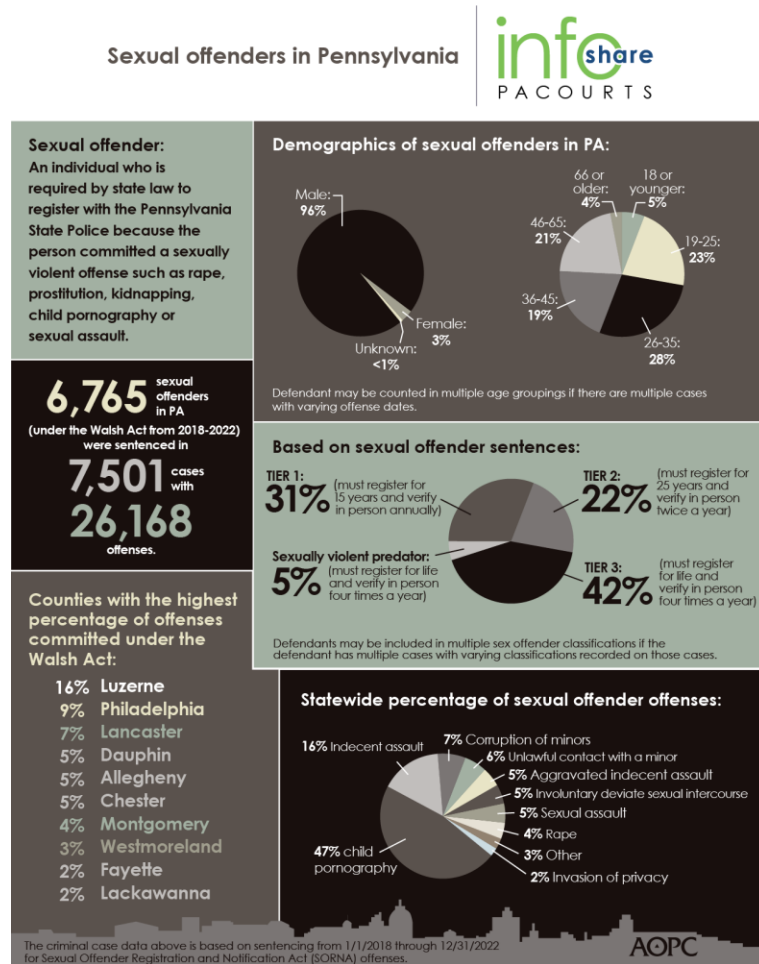


**Infographic for Immediate Release**  
July 7, 2023

**A snapshot of sexual offenders in Pennsylvania**

**HARRISBURG** – Under Pennsylvania’s Sexual Offender Registration and Notification Act (SORNA), **6,765 people** were sentenced as sexual offenders between 2018 to 2022, and were charged with 26,168 offenses. Of those sexual offenders who were sentenced, 51% were between the ages of 19-35, and 47% were charged with child pornography.

The infographic below highlights key data and demographics about sexual offenders in Pennsylvania. [Download a high-resolution version](#) of the graphic.



*PA Courts InfoShare is a monthly product of the Administrative Office of Pennsylvania Courts (AOPC) that visually highlights the work of the courts with interesting data and statistics obtained through the judiciary's case management systems, interactive dashboards and other research. Reproduction is permissible with source cited.*



##

**Media contact:** [Casey Scheffler](#), 610-425-1712

**Editor's Note:**

**Statewide number of Walsh Act Offenses on criminal cases sentenced from 1/1/2018 through 12/31/2022 for a Walsh Act Offense (By County)**

County	2018	2019	2020	2021	2022	Grand Total	Percentage of Total
Adams	20	27	14	19	21	101	0.39%
Allegheny	278	350	152	208	327	1,315	5.03%
Armstrong	11	60	39	14	25	149	0.57%
Beaver	29	37	72	79	189	406	1.55%
Bedford	21	36	13	7	32	109	0.42%
Berks	69	92	70	83	99	413	1.58%
Blair	115	141	304	71	236	867	3.31%
Bradford	39	25	37	16	18	135	0.52%
Bucks	120	147	114	87	158	626	2.39%
Butler	18	6	35	16	26	101	0.39%
Cambria	39	52	38	19	38	186	0.71%
Cameron	2	3	16	4	5	30	0.11%
Carbon	34	36	16	13	11	110	0.42%
Centre	36	111	28	254	29	458	1.75%
Chester	121	168	666	125	210	1,290	4.93%
Clarion	65	10	5	4	7	91	0.35%
Clearfield	50	171	32	26	61	340	1.30%
Clinton	11	2	22	49	19	103	0.39%
Columbia	5	14	4	4	15	42	0.16%
Crawford	70	29	22	135	13	269	1.03%
Cumberland	37	41	48	79	87	292	1.12%
Dauphin	156	427	207	238	339	1,367	5.22%

Delaware	108	100	78	54	159	499	1.91%
Elk	10	61	15	11	9	106	0.41%
Erie	54	84	46	67	92	343	1.31%
Fayette	167	135	84	92	113	591	2.26%
Forest	2	0	0	1	1	4	0.02%
Franklin	61	73	71	70	71	346	1.32%
Fulton	3	7	1	1	6	18	0.07%
Greene	3	19	1	5	6	34	0.13%
Huntingdon	15	17	10	13	21	76	0.29%
Indiana	18	19	14	65	30	146	0.56%
Jefferson	10	49	29	66	38	192	0.73%
Juniata	7	14	7	19	3	50	0.19%
Lackawanna	55	32	251	128	118	584	2.23%
Lancaster	216	294	184	458	522	1,674	6.40%
Lawrence	26	14	9	5	41	95	0.36%
Lebanon	135	125	96	64	105	525	2.01%
Lehigh	23	155	17	57	53	305	1.17%
Luzerne	843	144	898	1,090	1,161	4,136	15.81%
Lycoming	44	42	17	150	144	397	1.52%
McKean	6	10	19	21	40	96	0.37%
Mercer	70	45	47	36	51	249	0.95%
Mifflin	10	10	8	4	12	44	0.17%
Monroe	27	26	46	19	66	184	0.70%
Montgomery	166	220	88	106	359	939	3.59%
Montour	8	1	7	13	1	30	0.11%
Northampton	130	31	35	46	79	321	1.23%
Northumberland	44	29	35	21	37	166	0.63%
Perry	7	16	16	46	31	116	0.44%
Philadelphia	509	549	239	356	692	2,345	8.96%
Pike	36	13	18	5	6	78	0.30%
Potter	15	14	8	6	14	57	0.22%
Schuylkill	50	99	87	56	147	439	1.68%
Snyder	18	2	13	15	26	74	0.28%
Somerset	22	21	1	8	20	72	0.28%
Sullivan	0	0	1	0	0	1	0.00%
Susquehanna	15	1	4	9	2	31	0.12%
Tioga	19	19	4	10	18	70	0.27%
Union	5	45	5	14	12	81	0.31%
Venango	17	7	9	121	60	214	0.82%
Warren	7	6	16	21	20	70	0.27%
Washington	40	48	15	39	40	182	0.70%

<b>Wayne</b>	<b>13</b>	<b>8</b>	<b>5</b>	<b>6</b>	<b>11</b>	<b>43</b>	<b>0.16%</b>
<b>Westmoreland</b>	<b>73</b>	<b>180</b>	<b>111</b>	<b>168</b>	<b>202</b>	<b>734</b>	<b>2.80%</b>
<b>Wyoming</b>	<b>5</b>	<b>18</b>	<b>1</b>	<b>3</b>	<b>8</b>	<b>35</b>	<b>0.13%</b>
<b>York</b>	<b>153</b>	<b>80</b>	<b>75</b>	<b>148</b>	<b>120</b>	<b>576</b>	<b>2.20%</b>
<b>Grand Total</b>	<b>4,611</b>	<b>4,867</b>	<b>4,695</b>	<b>5,263</b>	<b>6,732</b>	<b>26,168</b>	