

Infographic for Immediate Release

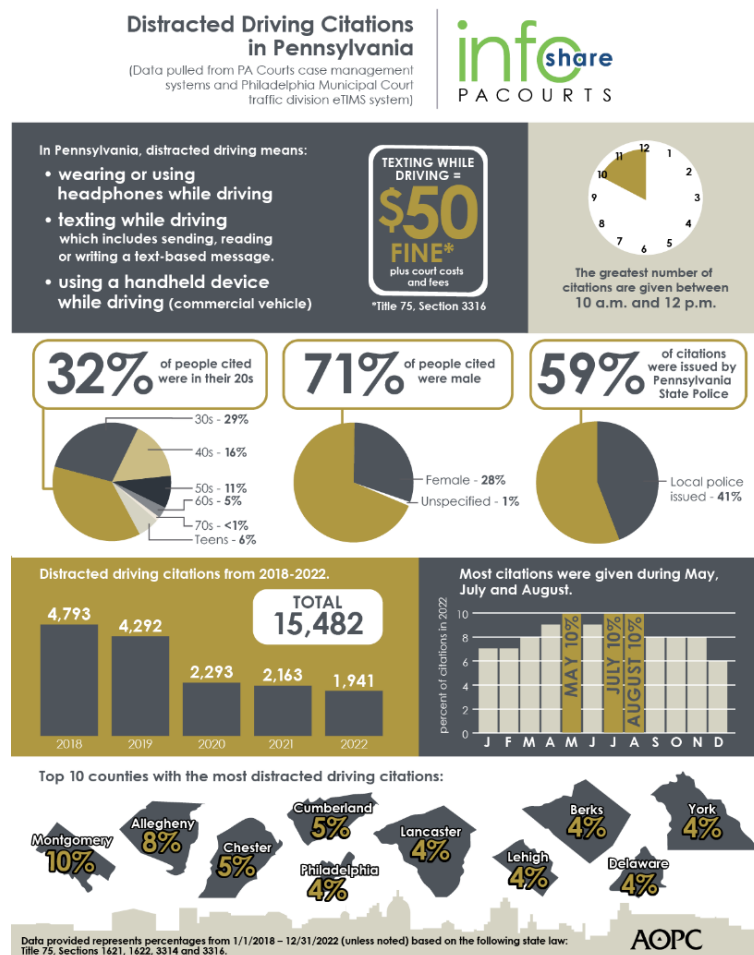
April 3, 2023

Distracted driving citations in Pennsylvania

HARRISBURG – Distracted driving citations in Pennsylvania continue to trend downward as 2022 data shows citations decreased **10 percent from last year** – representing a **60 percent decrease from 2018**.

Distracted driving citations in Pennsylvania can be issued for 1) using headphones while driving, 2) using a handheld mobile phone while driving a commercial vehicle or 3) texting while driving. Texting includes sending, reading or writing a text-based message.

The infographic below highlights key data and demographics about distracted drivers in Pennsylvania over the last five years (2018 – 2022). A high-resolution file of the graphic is available for download at www.pacourts.us under [Media Resources](#). See editor’s note for detailed county data.



PA Courts InfoShare is a monthly product of the Administrative Office of Pennsylvania Courts (AOPC) that visually highlights the work of the courts with interesting data and statistics obtained through the judiciary's case management systems, interactive dashboards and other research. Reproduction is permissible with source cited.

###

Media contact: [Kimberly Bathgate](mailto:Kimberly.Bathgate@pasc.org), 717-231-3331

Editor's Note:

Statewide Count of distracted driving offenses filed from 1/1/2018 through 12/31/2021, as recorded in the Magisterial District Judge System (MDJS) and Philadelphia Municipal Court Traffic Division eTIMS System; Grouped by County

County	2018	2019	2020	2021	2022	Total	Percentage of Total
Adams	57	55	37	31	18	198	1.28%
Allegheny	384	273	197	219	153	1,226	7.92%
Armstrong	9	17	8	8	8	50	0.32%
Beaver	32	22	15	10	17	96	0.62%
Bedford	41	24	17	11	11	104	0.67%
Berks	189	199	103	83	82	656	4.24%
Blair	22	25	16	18	9	90	0.58%
Bradford	6	10	5	7	14	42	0.27%
Bucks	217	139	60	56	52	524	3.38%
Butler	46	50	35	21	32	184	1.19%
Cambria	18	34	12	11	11	86	0.56%
Cameron	4	1	1	1	0	7	0.05%
Carbon	28	30	18	19	15	110	0.71%
Centre	42	17	13	12	10	94	0.61%
Chester	272	216	116	102	116	822	5.31%
Clarion	27	23	16	4	8	78	0.50%
Clearfield	16	10	22	10	18	76	0.49%
Clinton	13	31	12	15	12	83	0.54%
Columbia	89	51	37	25	38	240	1.55%
Crawford	20	22	38	16	12	108	0.70%
Cumberland	189	261	113	95	58	716	4.62%
Dauphin	127	155	106	75	73	536	3.46%
Delaware	157	177	80	95	109	618	3.99%
Elk	53	16	4	16	6	95	0.61%
Erie	56	43	37	44	43	223	1.44%
Fayette	33	27	16	22	21	119	0.77%
Forest	4	5	4	2	3	18	0.12%
Franklin	57	71	59	40	45	272	1.76%
Fulton	15	11	6	3	3	38	0.25%

Greene	12	8	1	5	17	43	0.28%
Huntingdon	8	3	2	4	4	21	0.14%
Indiana	24	18	5	7	5	59	0.38%
Jefferson	17	27	35	10	11	100	0.65%
Juniata	15	16	8	2	6	47	0.30%
Lackawanna	102	99	47	45	39	332	2.14%
Lancaster	214	174	82	58	81	609	3.93%
Lawrence	30	19	8	13	11	81	0.52%
Lebanon	105	93	26	28	20	272	1.76%
Lehigh	163	201	90	78	64	596	3.85%
Luzerne	107	122	83	84	94	490	3.16%
Lycoming	33	40	15	12	11	111	0.72%
McKean	14	12	7	6	9	48	0.31%
Mercer	45	39	27	30	17	158	1.02%
Mifflin	4	4	2	7	4	21	0.14%
Monroe	60	77	46	35	40	258	1.67%
Montgomery	577	443	188	221	150	1,579	10.20%
Montour	3	8	0	3	3	17	0.11%
Northampton	149	110	51	54	40	404	2.61%
Northumberland	23	16	22	8	5	74	0.48%
Perry	22	12	6	10	6	56	0.36%
Philadelphia	255	211	74	61	56	657	4.24%
Pike	11	18	11	12	10	62	0.40%
Potter	22	9	2	7	6	46	0.30%
Schuylkill	34	41	14	28	18	135	0.87%
Snyder	25	26	13	17	12	93	0.60%
Somerset	42	29	16	6	10	103	0.67%
Sullivan	0	1	2	0	1	4	0.03%
Susquehanna	40	21	14	21	25	121	0.78%
Tioga	11	15	3	7	10	46	0.30%
Union	12	13	5	4	3	37	0.24%
Venango	27	45	22	21	10	125	0.81%
Warren	7	2	3	6	3	21	0.14%
Washington	83	62	34	25	18	222	1.43%
Wayne	7	7	5	8	2	29	0.19%
Westmoreland	81	78	39	54	32	284	1.83%
Wyoming	16	16	5	3	4	44	0.28%
York	170	142	77	92	87	568	3.67%
Grand Total	4,793	4,292	2,293	2,163	1,941	15,482	N/A