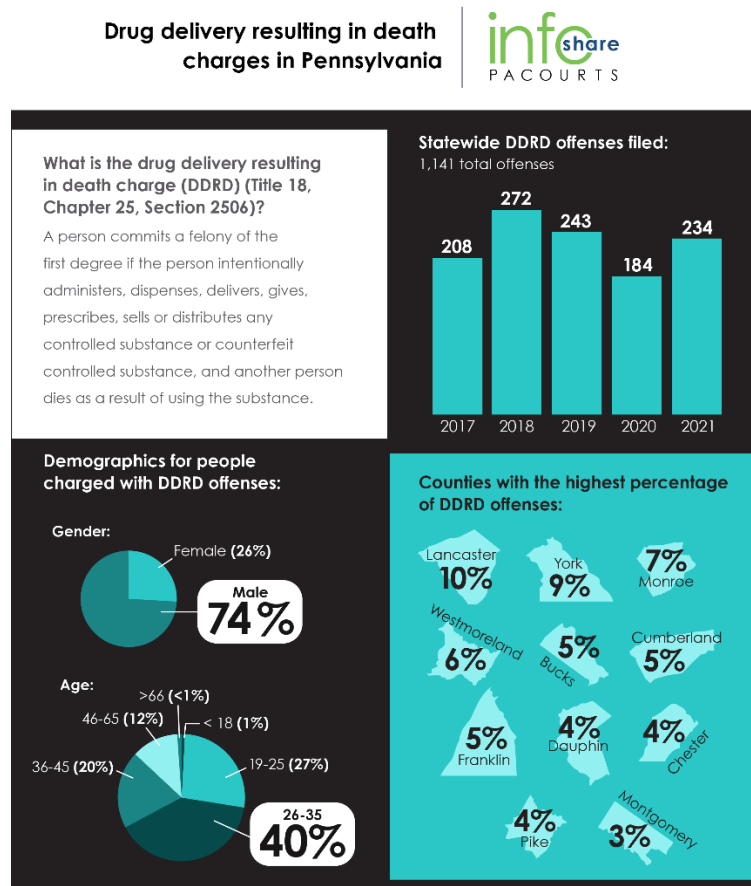


Infographic for Immediate Release
Dec. 2, 2022

Drug Delivery Resulting in Death Charges in Pennsylvania

HARRISBURG — In Pennsylvania, a drug delivery resulting in death (DDRD) charge is issued to a person who intentionally administers, dispenses, delivers, gives, prescribes, sells or distributes any controlled substance or counterfeit controlled substance, and another person dies as a result of using the substance.

The infographic below highlights key data and demographics about DDRD charges in Pennsylvania over the past five years. [Download a high-resolution file](#) of the graphic and view county-by-county stats included at the end of this release.



*Data represents drug delivery resulting in death offenses filed on criminal cases from 1/1/2017 to 12/31/2021 under Title 18, Chapter 25 Section 2506 and recorded in Pennsylvania's Common Pleas Case Management System (CPCMS). AOPC

PA Courts InfoShare is a monthly product of the Administrative Office of Pennsylvania Courts (AOPC) that visually highlights the work of the courts with interesting data and statistics obtained through the judiciary's case management systems, interactive dashboards and other research. Reproduction is encouraged with source cited.



##

Media contact: [Kim Bathgate](#), 717-231-3331

Editor's Note: Statewide number of offenses filed on criminal cases from 1/1/2017 through 12/31/2021 for a Drug Delivery Resulting in Death Offense; Grouped by County

County	2017	2018	2019	2020	2021	Total	Percentage of Total
Adams	1	1	0	3	0	5	0.44%
Allegheny	5	8	3	0	1	17	1.49%
Armstrong	1	1	6	2	0	10	0.88%
Beaver	10	3	4	5	6	28	2.45%
Bedford	0	2	0	2	0	4	0.35%
Berks	1	5	4	3	12	25	2.19%
Blair	13	1	2	4	1	21	1.84%
Bradford	0	0	0	0	1	1	0.09%
Bucks	6	14	4	11	17	52	4.56%
Butler	2	1	4	1	1	9	0.79%
Cambria	1	1	2	1	0	5	0.44%
Centre	4	6	1	0	0	11	0.96%
Chester	9	25	11	5	1	51	4.47%
Clarion	2	3	6	0	0	11	0.96%
Clearfield	0	0	0	2	1	3	0.26%
Clinton	1	0	0	0	0	1	0.09%
Columbia	0	0	0	0	1	1	0.09%
Crawford	1	3	1	0	0	5	0.44%
Cumberland	7	14	14	12	7	54	4.73%
Dauphin	15	17	7	5	3	47	4.12%
Delaware	3	2	4	0	9	18	1.58%
Elk	0	5	4	3	2	14	1.23%
Erie	1	11	1	1	2	16	1.40%

Fayette	0	5	3	2	7	17	1.49%
Franklin	17	14	2	11	9	53	4.65%
Fulton	0	0	0	0	1	1	0.09%
Greene	0	0	0	0	1	1	0.09%
Huntingdon	0	1	1	0	0	2	0.18%
Indiana	0	1	0	0	1	2	0.18%
Jefferson	0	2	0	0	0	2	0.18%
Juniata	0	0	0	0	0	0	0.00%
Lackawanna	0	3	2	8	2	15	1.31%
Lancaster	25	43	21	17	16	122	10.69%
Lawrence	0	1	1	0	0	2	0.18%
Lebanon	1	1	0	0	4	6	0.53%
Lehigh	0	4	2	0	2	8	0.70%
Luzerne	5	0	1	0	1	7	0.61%
Lycoming	0	0	0	1	1	2	0.18%
McKean	3	0	0	0	0	3	0.26%
Mercer	0	3	2	4	4	13	1.14%
Mifflin	0	0	1	0	1	2	0.18%
Monroe	1	8	11	31	25	76	6.66%
Montgomery	10	3	11	2	12	38	3.33%
Northampton	1	1	2	1	5	10	0.88%
Northumberland	0	2	0	0	0	2	0.18%
Perry	0	0	0	9	9	18	1.58%
Philadelphia	6	0	1	4	9	20	1.75%
Pike	0	15	12	5	9	41	3.59%
Potter	1	0	0	0	0	1	0.09%
Schuylkill	3	1	0	1	0	5	0.44%
Snyder	0	1	0	0	1	2	0.18%
Somerset	13	6	11	2	6	38	3.33%
Tioga	0	0	0	0	0	0	0.00%
Union	0	0	0	4	0	4	0.35%
Venango	0	1	4	1	2	8	0.70%
Warren	0	0	2	0	0	2	0.18%
Washington	3	0	4	8	15	30	2.63%
Wayne	0	0	4	1	0	5	0.44%
Westmoreland	11	14	23	7	16	71	6.22%
Wyoming	0	0	1	0	0	1	0.09%
York	25	19	43	5	10	102	8.94%
Grand Total	208	272	243	184	234	1,141	n/a