

## Infographic for Immediate Release

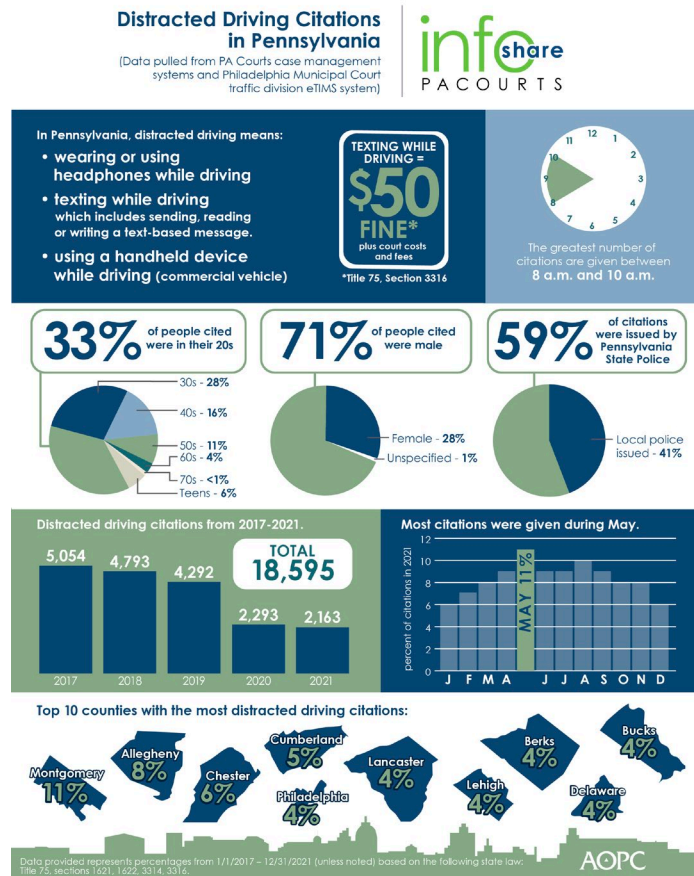
April 12, 2022

### Distracted driving citations in Pennsylvania

**HARRISBURG** – Distracted driving citations in Pennsylvania continue to trend downward as data shows citations **decreased by six percent in 2021**, following a significant **47 percent decrease in 2020**.

Distracted-driving citations in Pennsylvania can be issued for 1) using headphones while driving, 2) using a handheld mobile phone while driving a commercial vehicle or 3) texting while driving. Texting includes sending, reading or writing a text-based message.

The infographic below highlights key data and demographics about distracted drivers in Pennsylvania over the last five years. Detailed county data is [available here](#). A high-resolution file of the graphic is available for download at [www.pacourts.us](http://www.pacourts.us) under [Media Resources](#).



*PA Courts InfoShare* is a monthly product of the Administrative Office of Pennsylvania Courts (AOPC) that visually highlights the work of the courts with interesting data and statistics obtained through the judiciary's case management systems, interactive dashboards and other research. Reproduction is permissible with source cited.

##

**Media contact:** [Kimberly Bathgate](#), 717-231-3331

**Editor's Note:**

Statewide Count of distracted driving offenses filed from 1/1/2017 through 12/31/2021, as recorded in the Magisterial District Judge System (MDJS) and Philadelphia Municipal Court Traffic Division eTIMS System; Grouped by County

County	2017	2018	2019	2020	2021	Total	Percentage of Total
Adams	45	57	55	37	31	225	1.21%
Allegheny	383	384	273	197	219	1,456	7.83%
Armstrong	13	9	17	8	8	55	0.30%
Beaver	38	32	22	15	10	117	0.63%
Bedford	28	41	24	17	11	121	0.65%
Berks	198	189	199	103	83	772	4.15%
Blair	18	22	25	16	18	99	0.53%
Bradford	11	6	10	5	7	39	0.21%
Bucks	294	217	139	60	56	766	4.12%
Butler	51	46	50	35	21	203	1.09%
Cambria	15	18	34	12	11	90	0.48%
Cameron	2	4	1	1	1	9	0.05%
Carbon	30	28	30	18	19	125	0.67%
Centre	39	42	17	13	12	123	0.66%
Chester	339	272	216	116	102	1,045	5.62%
Clarion	42	27	23	16	4	112	0.60%
Clearfield	17	16	10	22	10	75	0.40%
Clinton	31	13	31	12	15	102	0.55%
Columbia	59	89	51	37	25	261	1.40%
Crawford	22	20	22	38	16	118	0.63%
Cumberland	220	189	261	113	95	878	4.72%
Dauphin	86	127	155	106	75	549	2.95%
Delaware	208	157	177	80	95	717	3.86%
Elk	11	53	16	4	16	100	0.54%

Erie	74	56	43	37	44	254	1.37%
Fayette	34	33	27	16	22	132	0.71%
Forest	4	4	5	4	2	19	0.10%
Franklin	72	57	71	59	40	299	1.61%
Fulton	10	15	11	6	3	45	0.24%
Greene	11	12	8	1	5	37	0.20%
Huntingdon	13	8	3	2	4	30	0.16%
Indiana	23	24	18	5	7	77	0.41%
Jefferson	42	17	27	35	10	131	0.70%
Juniata	7	15	16	8	2	48	0.26%
Lackawanna	121	102	99	47	45	414	2.23%
Lancaster	244	214	174	82	58	772	4.15%
Lawrence	42	30	19	8	13	112	0.60%
Lebanon	49	105	93	26	28	301	1.62%
Lehigh	220	163	201	90	78	752	4.04%
Luzerne	84	107	122	83	84	480	2.58%
Lycoming	27	33	40	15	12	127	0.68%
McKean	6	14	12	7	6	45	0.24%
Mercer	33	45	39	27	30	174	0.94%
Mifflin	7	4	4	2	7	24	0.13%
Monroe	45	60	77	46	35	263	1.41%
Montgomery	620	577	443	188	221	2,049	11.02%
Montour	5	3	8	0	3	19	0.10%
Northampton	219	149	110	51	54	583	3.14%
Northumberland	23	23	16	22	8	92	0.49%
Perry	17	22	12	6	10	67	0.36%
Philadelphia	216	255	211	74	61	817	4.39%
Pike	23	11	18	11	12	75	0.40%
Potter	28	22	9	2	7	68	0.37%
Schuylkill	31	34	41	14	28	148	0.80%
Snyder	30	25	26	13	17	111	0.60%
Somerset	28	42	29	16	6	121	0.65%
Sullivan	3	0	1	2	0	6	0.03%
Susquehanna	37	40	21	14	21	133	0.72%
Tioga	11	11	15	3	7	47	0.25%
Union	6	12	13	5	4	40	0.22%
Venango	21	27	45	22	21	136	0.73%
Warren	5	7	2	3	6	23	0.12%
Washington	79	83	62	34	25	283	1.52%
Wayne	9	7	7	5	8	36	0.19%
Westmoreland	74	81	78	39	54	326	1.75%

Wyoming	10	16	16	5	3	50	0.27%
York	191	170	142	77	92	672	3.61%
<b>Grand Total</b>	<b>5,054</b>	<b>4,793</b>	<b>4,292</b>	<b>2,293</b>	<b>2,163</b>	<b>18,595</b>	<b>N/A</b>