

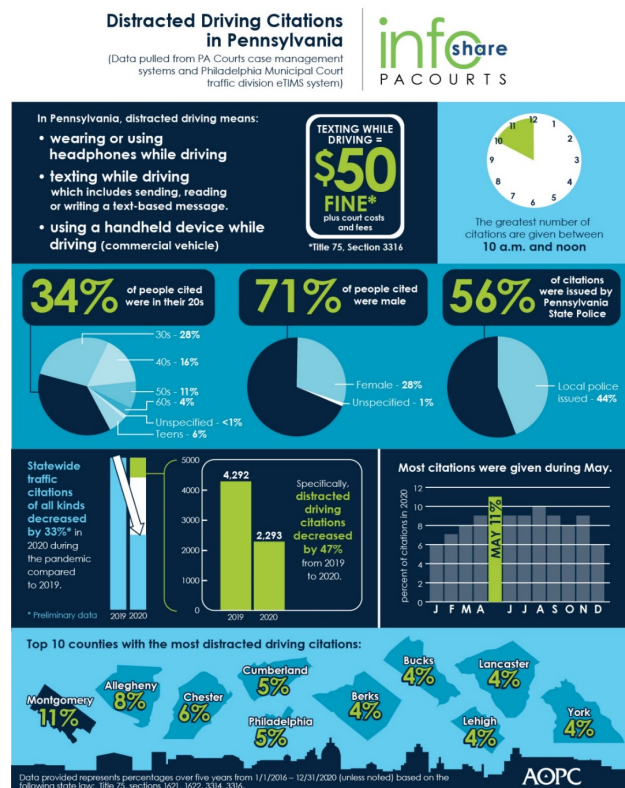
**Infographic for Immediate Release**  
*April 1, 2021*

## Distracted-driving citations in Pennsylvania

**HARRISBURG** – Overall traffic citations in Pennsylvania decreased by 33 percent in 2020 during the pandemic compared to 2019. Specifically, **distracted-driving citations decreased by 47 percent** statewide from 2019 to 2020.

Distracted-driving citations in Pennsylvania can be issued for 1) using headphones while driving, 2) using a handheld mobile phone while driving a commercial vehicle or 3) texting while driving. Texting includes sending, reading or writing a text-based message.

The infographic below highlights key data and demographics about distracted drivers in Pennsylvania over the last five years. Detailed county data is [available here](#). A high-resolution file of the graphic is available for download at [www.pacourts.us](http://www.pacourts.us) under [Media Resources](#).



*PA Courts InfoShare* is a monthly product of the Administrative Office of Pennsylvania Courts (AOPC) that visually highlights the work of the courts with interesting data and statistics obtained through the judiciary's case management systems, interactive dashboards and other research. Reproduction is permissible with source cited.

##

**Media contact:** [Kimberly Bathgate](#), 717-231-3331

Editor's Note:

**Statewide Count of distracted driving offenses filed from 1/1/2016 through 12/31/2020; Grouped by County**

County	2016	2017	2018	2019	2020	Total	Percentage of Total
Adams	26	45	57	55	37	220	1.11%
Allegheny	316	383	384	273	197	1,553	7.86%
Armstrong	7	13	9	17	8	54	0.27%
Beaver	12	38	32	22	15	119	0.60%
Bedford	26	28	41	24	17	136	0.69%
Berks	117	198	189	199	103	806	4.08%
Blair	34	18	22	25	16	115	0.58%
Bradford	12	11	6	10	5	44	0.22%
Bucks	152	294	217	139	60	862	4.36%
Butler	45	51	46	50	35	227	1.15%
Cambria	17	15	18	34	12	96	0.49%
Cameron	3	2	4	1	1	11	0.06%
Carbon	19	30	28	30	18	125	0.63%
Centre	29	39	42	17	13	140	0.71%
Chester	208	339	272	216	116	1,151	5.82%
Clarion	15	42	27	23	16	123	0.62%
Clearfield	16	17	16	10	22	81	0.41%
Clinton	12	31	13	31	12	99	0.50%
Columbia	36	59	89	51	37	272	1.38%
Crawford	21	22	20	22	38	123	0.62%
Cumberland	179	220	189	261	113	962	4.87%
Dauphin	70	86	127	155	106	544	2.75%
Delaware	127	208	157	177	80	749	3.79%
Elk	2	11	53	16	4	86	0.44%
Erie	32	74	56	43	37	242	1.22%
Fayette	13	34	33	27	16	123	0.62%
Forest	1	4	4	5	4	18	0.09%
Franklin	46	72	57	71	59	305	1.54%
Fulton	7	10	15	11	6	49	0.25%

Greene	8	11	12	8	1	40	0.20%
Huntingdon	12	13	8	3	2	38	0.19%
Indiana	22	23	24	18	5	92	0.47%
Jefferson	8	42	17	27	35	129	0.65%
Juniata	9	7	15	16	8	55	0.28%
Lackawanna	86	121	102	99	47	455	2.30%
Lancaster	116	244	214	174	82	830	4.20%
Lawrence	12	42	30	19	8	111	0.56%
Lebanon	28	49	105	93	26	301	1.52%
Lehigh	93	220	163	201	90	767	3.88%
Luzerne	53	84	107	122	83	449	2.27%
Lycoming	18	27	33	40	15	133	0.67%
McKean	2	6	14	12	7	41	0.21%
Mercer	17	33	45	39	27	161	0.81%
Mifflin	8	7	4	4	2	25	0.13%
Monroe	63	45	60	77	46	291	1.47%
Montgomery	379	620	577	443	188	2,207	11.16%
Montour	1	5	3	8	0	17	0.09%
Northampton	78	219	149	110	51	607	3.07%
Northumberland	21	23	23	16	22	105	0.53%
Perry	4	17	22	12	6	61	0.31%
Philadelphia	216	216	255	211	74	972	4.92%
Pike	16	23	11	18	11	79	0.40%
Potter	17	28	22	9	2	78	0.39%
Schuylkill	22	31	34	41	14	142	0.72%
Snyder	19	30	25	26	13	113	0.57%
Somerset	6	28	42	29	16	121	0.61%
Sullivan	4	3	0	1	2	10	0.05%
Susquehanna	15	37	40	21	14	127	0.64%
Tioga	6	11	11	15	3	46	0.23%
Union	8	6	12	13	5	44	0.22%
Venango	7	21	27	45	22	122	0.62%
Warren	8	5	7	2	3	25	0.13%
Washington	58	79	83	62	34	316	1.60%
Wayne	7	9	7	7	5	35	0.18%
Westmoreland	71	74	81	78	39	343	1.74%
Wyoming	6	10	16	16	5	53	0.27%
York	212	191	170	142	77	792	4.01%
<b>Grand Total</b>	<b>3,336</b>	<b>5,054</b>	<b>4,793</b>	<b>4,292</b>	<b>2,293</b>	<b>19,768</b>	<b>N/A</b>